



HEREFORDSHIRE
PROVINCIAL
NEWSLETTER

The Craftsmen

Issue 73 - October 2022



1 9 2 6 - 2 0 2 2

History Being Made

The investiture of three new rulers

Golf Society Update

Open Championship Match Report

National Digital Marketing Campaign

An update

Out and About

A round-up of events around the Province for Craft and Chapter

Fun and Games

In T@3 with a crossword on the First Degree

Postcards From Life

The annual St Michael's art auction

MCF Advice and Support Team

Help during the cost of living crisis

Would I Know, Did I Know?

Exploring:- SkirrEt, SkirrIt or SkilLet

The Craftsmen

The Official Newsletter of the
Province of Herefordshire

Issue 73 - October 2022

Editor - Andrew Moore

Editorial Panel

Prov Comms Officer - Paul Sabel
Palladian Lodge - Tom Spellane
Vitruvian Lodge - Andrew Moore
Eastnor Lodge - Nick Humphrey
Royal Edward Lodge - Michael Hopkins
Arrow Lodge - Tommy Santillo
Loyal Hay Lodge - Tony Mercer
Vaga Lodge - Vacant
Cantilupe Lodge - Michael Francis
Coningsby Lodge - Kevin Jones
Delphis Lodge - Vacant
Saint Peter's Lodge - Peter Hamblin
Dean Waterfield Lodge - Paul Sabel
Ariconium Lodge - Vacant

Published on the first Monday of
each month

© Herefordshire Province

The opinions herein are those of the
authors or persons interviewed only
and do not reflect the views of the
Province of Herefordshire.

Contact Us

craftsmen@herefordshiremasons.org.uk



[@HerefordshireFreemasons](https://twitter.com/HerefordshireFreemasons)



[Herefordshire-Freemasons](https://www.facebook.com/Herefordshire-Freemasons)



[@herefordshirefreemasons](https://www.instagram.com/herefordshirefreemasons)



[herefordshiremasons.org.uk](https://www.herefordshiremasons.org.uk)

CONTENTS

Out and About

A round-up of news and events in and
around the Province.



Golf Society Update

Match report from the Open
Championship at Wormsley .



The MCF Advice and Support Team

Supporting Freemasons and their
families through the cost of living
crisis.

History Being Made

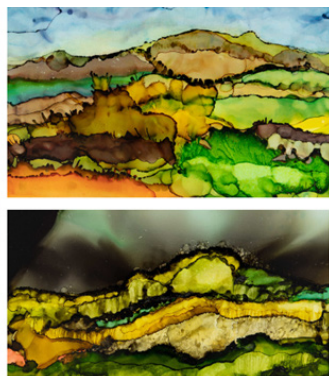
The investiture of three new rulers

Coincidences

Allan Flexman regales an unlikely
coincidence.

St Michael's Postcards From Life

This years online auction in aid of St
Michael's Hospice.



FEATURES

National Digital Marketing Campaign

An update on the current campaign.



The Answer to Where am I from Last Month?

Did you find where we were last
month?



Would I Know the Answer, Did I Know the Answer?

Exploring:- SkirrEt, SkirrIt or SkillLet

T@3 including this month's Crossword

This month's crossword featuring The
First Degree



Bringing you news from the Masonic
Province of Herefordshire

Would I know the answer?

Did I know the answer?

By W Bro Dennis W. Roberts, PAGDC Group Leader Information and Guidance Group

I asked myself: SkirrEt, SkirrIt or SkillEt?

Is it a pan for cooking, a vegetable or a measuring line? Skillet is for cooking, Skirrit is a vegetable and Skirret is a measuring line. The last is of course referred to in our ritual and has a symbolic meaning.

As a boy I remember my father on his allotment in the springtime, when we would join him for the planting and setting of seeds. Out from the shed would come 'the line'; a device made by the local blacksmith with a frame and a centre spindle and string would around the frame. Duly armed, we would set off and after preparing the soil, the line was pulled out across the bed, and a line marked to plant the seed. Little did I think that I would meet the same tool after I joined Freemasonry. Interestingly the Skirret can be used for drawing circles too.

From ancient times, the Skirret is a measure; one that is to ensure that the foundation of a building is straight by laying down a string as a marker. In Freemasonry it is related, symbolically, to the 24 inch gauge and the plumb rule. It represents the foundation of the way of life we are to follow as laid down by our Creator. Keeping on the straight and narrow is one of our fundamental principles

We should allow the Skirret, therefore to remind us to start building our character on a proper foundation, and we should allow this tool to remind us as to why we need to follow the many virtues of behaviour found in our Masonic ceremonies.



If you have not visited the 'Solomon' site lately, you should. There are now Videos, Podcasts and Webinars available for more in depth explanations. Useful for future meetings when no candidate is available.



Out and About



Historic Meeting

A large contingent from Herefordshire attended the UGLE Quarterly Communication in September including the PGM and DPGM.

It was a special day, being the first time in the organisation's 305-year history where we were able to celebrate a new Pro Grand Master, Deputy Grand Master, and Assistant Grand Master being installed on the same day.

The contingent from Herefordshire then dined afterwards in the Connaught Rooms where the pictures were taken.



Pictured left and right, the Herefordshire contingent dining with members of the District Grand Lodge of Bombay



CAERULEUM CLUB

Date	2022 Events
October - 15 th	Frightmare Frightmare is a Halloween event held at Over Farm, the activities push the boundaries of human emotion, triggering fear, fun and everything in between, You can be scared, you can laugh, it's your experience.
November - 19 th	Metal Forging A Blacksmith's Forge in the Heart of the Herefordshire Countryside – make a sword, ring, knife....use fire to bend the metal to your will!
December - 19 th	Christmas Meal Join us for a meal out, where we can celebrate the end of the year together.

FURTHER DETAILS AND BOOKING ON THE WEBSITE [HERE](#)



Follow on Twitter [Here](#)



Follow on Facebook [Here](#)

Chapter News



Percentage Club Draw

The Royal Arch Province of Gloucestershire and Herefordshire runs a Percentage Club, which is a simple Private Society Lottery run on a basis similar to those commonly called a 100 or 200 Club. There are four draws per year held in May, September, December and February.

The September draw was taken at the Annual Convocation in Gloucester. The first two numbers were drawn by the Third Grand Principal, Most Excellent Companion Gareth Jones.

Congratulations to the winners:

First prize; £140; EComp Chris Calvert.
Second prize; £100; MEGS Michael Holland,
Third prize; £70; EComp Chris Ames,
Fourth prize: £40; EComp Dr David Patterson.

There are two more draws during this season, December '22 & March '23; each with 4 prizes, so you still have 8 chances of winning.

Thank you to all the Percentage Club supporters which this season has raised £1430 for the charity pot.

In the last year we have made the following donations:

- Lifelites £1,000 on 14th November 2021
- The Cart Shed (Hfds) £1097.55 on 8th December 2021
- Young Glos £ 750 on 12th March 2022

We are about to make a further donation to "Wye Valley; Music in Mind", based at St Briavels in the Forest of Dean.



Pictured right,
The MEGS
E Comp
Michael Holland,
E Comp
Basil Barke and
E Comp Charles
Perkins 3rd
Provincial
Grand Principal



Fifty Year Certificate

At the September meeting of St Georges Royal Arch Chapter No 900 the Most Excellent Grand Superintendent presented EComp Basil Barke PAGSoj with his 50 year certificate.

This had been somewhat delayed due to Covid restrictions. The Chapter is attached to Basil's Mother Lodge, St Georges No 900, into which he was initiated in 1959. E Comp Basil was a Founder of the Chapter.



Pictured
left E Comp
Dennis Beale
Provincial
Grand Charity
Steward
presents
EComp Chris
Calvert with
his winning
cheque at
Vitruvian
Chapter no
338 at their
convocation
on Friday 16th
Sept.

For further information on the Provincial Grand Chapter of Gloucestershire and Herefordshire visit the website [here](#) or speak with your Lodge's Royal Arch Representative.

Helping your community through the cost of living crisis



The Advice and Support Team (AST) at the Masonic Charitable Foundation (MCF), is committed to supporting Freemasons and their family members through financial, health, and other issues, and has had to step up its game in 2022 once the cost of living crisis struck.

Since February 2022, the UK has been battling with a spiralling inflation, which is currently at over nine per cent. More and more people are worried about putting food on the table, being able to afford transportation to get to work or send their children to school, as well as paying for fuel such as gas and electricity.

Seeing these prices increase daily can cause a lot of anxiety; according to the Office for National Statistics, 77 per cent of adults in the UK reported feeling very or somewhat worried about the rising costs of living, and 50 per cent of those who stated being very worried think about it nearly every day.

Thankfully, the MCF Advice and Support Team (AST) is here to help Freemasons and their family members with a free and confidential service, with advisers based regionally throughout England and Wales. Once a referral has been made, a local team member will call to discuss the situation and offer advice on any support or services available.

“There is a surprisingly large amount of people who are eligible for benefits but do not claim them because they are unaware or uninformed. One example that comes to mind is a recent conversation I had with a woman whose husband died after she had cared for him for 10 years. Her caring role was so all-consuming that she hadn’t considered or been aware of the benefits she was entitled to – and desperately needed when the cost of living started to rise – for her own financial and mobility struggles. Thankfully, we have been able to help her access disability credit and pension credit which she was entitled to all along.” – Caroline Wales, MCF Adviser.

As well as informing people of their eligibility, the AST can offer guidance and support with applications for state benefits. For those applying for an MCF grant, the team will take time to check the applicant’s eligibility by assessing their financial, personal, and/or health situation, as well as their link to Freemasonry. But the support doesn’t stop there; the MCF’s free and confidential counselling service has been crucial for many people dealing with the cost of living crisis and mental health illness as a result. Financial woes and poor mental health are strongly linked, as living in debt and struggling pay bills to can invite conditions such as anxiety, depression and stress – so it’s unsurprising that one in two adults with debts also has a mental health problem.

“There has been a significant increase in referrals to our free counselling service, and some financial support cases have even been recategorised as safeguarding cases.” – Caroline

As always, the Advice and Support team is continuing to monitor and respond to the current issues of today, and is able to make a difference to the lives of families in the Freemasonry community in these challenging times, thanks to the generosity of Freemasons.

Contact our enquiries team for more information and to get support.

0800 035 60 90

help@mcf.org.uk

mcf.org.uk/get-support

Subscribe today and receive a free MCF lapel pin: access mcf.org.uk/sign-up or scan the QR code below.





Herefordshire Provincial Golf Society

Match Report *Bro David Gwynne, the Society Secretary, gives us an update on the Open Championship held at the Herefordshire Golf Club in Wormsley..*



Our final golf meeting of the year was held at The Herefordshire Golf Club, Wormsley. As with our open championships, trophies were awarded for the best gross, net and best stableford for participating members; this year we invited guests to the event and that made for an opportunity to have a prize for the best stableford visitor.

The course was in fine condition and made for a challenge and the 16 participants all agreed they enjoyed their round. After the game, members wives and partners attended the meal at the club and they were not disappointed; chicken, pork, fish and vegetarian meals were offered followed by fruit crumble and lemon cheese cake.

The Captain, Des Watkins, would like to thank all those for attending his final game and for all those who have supported him during the past 2 years and is looking forward to handing over the post to Alastair Ross in 2023.

The match results:

- Nearest the pin on the 7th W Bro Mark Ashton visiting Shropshire Mason.
- Nearest the pin on the 13th Michael Holland, our PGM.
- Nearest the pin on the 15th Andrew Cartright.
- Longest driven on the 11th Richard Ashton visitor
- The best stableford scores for visitors Nick Lewis with 40 points.
- The best gross score W Bro David Hedley with 88 points.
- Best net score W Bro David Gwynne with 63 points
- Best stableford score W Bro David Gwynne with 42 points.

The A.G.M. will be held in March 2023 and it is hoped that as many who can make the meeting will be there to welcome the new Captain.

History Being Made

The first time in history that three Rulers have been installed at the same Quarterly Communication. Here is the address to the Brethren by the Pro Grand Master.



ABOVE - The Pro Grand Master Jonathan Spence

The Quarterly Communication on the 14th September was a historical event, as it was the first time in history that three Rulers had been installed in the same Quarterly Communication.

At that meeting the newly appointed Pro Grand Master gave the following address:

Brethren today is not one for a long address from the Presiding Officer.

As many of you will know, today's Installations are a first in the history of the United Grand Lodge of England with three Rulers being installed at the same Quarterly Communication. We are all very aware of the responsibilities which we are each assuming and are all very grateful for the messages of support and congratulations which we have each received. We will do our very best to maintain the high standards set by the Grand Master and, indeed, our predecessors. I am particularly grateful to the Past Pro Grand Master for presiding on behalf of the Most Worshipful The Grand Master over the first part of this

communication and for installing me.

I would like to thank the Grand Director of Ceremonies and his extended team for the seamless way in which today has been managed with ceremonial of the usual exemplary standard. I should also like to thank particularly the Deputy Grand Secretary, the Assistant Grand Secretaries and all the staff in Masonic Services for managing the logistical challenges of this meeting, including allocating 2,200 tickets to this Communication in a very short period of time.

Today's Quarterly Communication is overshadowed by the death last week of our beloved Sovereign. You have all paid tribute to Her late Majesty earlier in this meeting and, as you will appreciate, with the Royal Family being in Royal Mourning, the Most Worshipful The Grand Master is unable to attend today. I hope you will all agree it is appropriate that this Quarterly Communication send a message of condolence to The Grand Master in the following terms:

Your Royal Highness,

The members of the United Grand Lodge of England, in Quarterly Communication assembled, send their sincere and heartfelt condolences to Your Royal Highness on the death of Your Royal Highness's cousin, and our Sovereign Lady, Her Majesty Queen Elizabeth II, of blessed and glorious memory.

Pro Grand Master Wednesday 14 September 2022

The message will be despatched to The Grand Master this afternoon.

With the accession of His Majesty King Charles III, I have no doubt that Freemasons under the United Grand Lodge of England will show the same high level of loyalty and affection to His Majesty as they have done consistently to Queen Elizabeth the Second over the whole of her reign.

We are living through a period of history we will all remember and as we move forward there are many challenges ahead but much to be thankful for in the Society in which we live, and Freemasonry will continue to play its full part as life develops in the new reign.

It only remains for me to say

GOD SAVE THE KING

Our Three Rulers and the Grand Secretary



**MW Bro Jonathan
Spence
Pro Grand Master**

Jonathan became a Freemason in October 1982 when he was initiated into Sir Joseph Williamson No. 4605, in the Province of East Kent.

Jonathan was appointed Grand Director of Ceremonies in 2003 and served in that office until his appointment as Deputy Grand Master on 11 March 2009. Jonathan was appointed as Pro Grand Master in 2022.

When the Grand Master is a member of the Royal Family, he may appoint a Pro Grand Master to be his principal adviser and to act for him on occasions when, due to Royal engagements, he is unable to be present.



**RW Bro Sir David
Wootton
Deputy Grand Master**

Sir David became a Freemason in 1975 when he was initiated into Argonauts Lodge No. 2243, a rowing Lodge that meets in London.

He served as Metropolitan Senior Grand Warden in 2007, and was promoted to Past Grand Sword Bearer in 2012, before his appointment as Assistant Grand Master on 12 March 2014. Sir David was appointed as Deputy Grand Master in 2022.

Sir David is also President of UGLE's Universities Scheme.



**RW Bro David
Medlock DL
Assistant Grand Master**

RW Bro David is Past Provincial Grand Master for Somerset and a Past Master of St Alphege Lodge No 4095.

He served as the Provincial Senior Grand Warden in 2001-2 and with distinction as Assistant Provincial Grand Master for Somerset from 2006 until 2011.

RW Bro David was installed as the Provincial Grand Master for Somerset at the Annual Meeting of Somerset Provincial Grand Lodge in 2019.

From both public and Masonic life, RW Bro David brings a wide range of experience and expertise to his new role.



**W Bro Adrian Marsh
Grand Secretary**

Worshipful Brother Adrian Marsh PJGD was appointed Grand Secretary in 2022.

Adrian was initiated into Strong Man Lodge No. 45 on 21 December 1989 and was Master of the Lodge in 1996. He was exalted into the Royal Arch in 1992 in Strong Man Chapter No. 45.

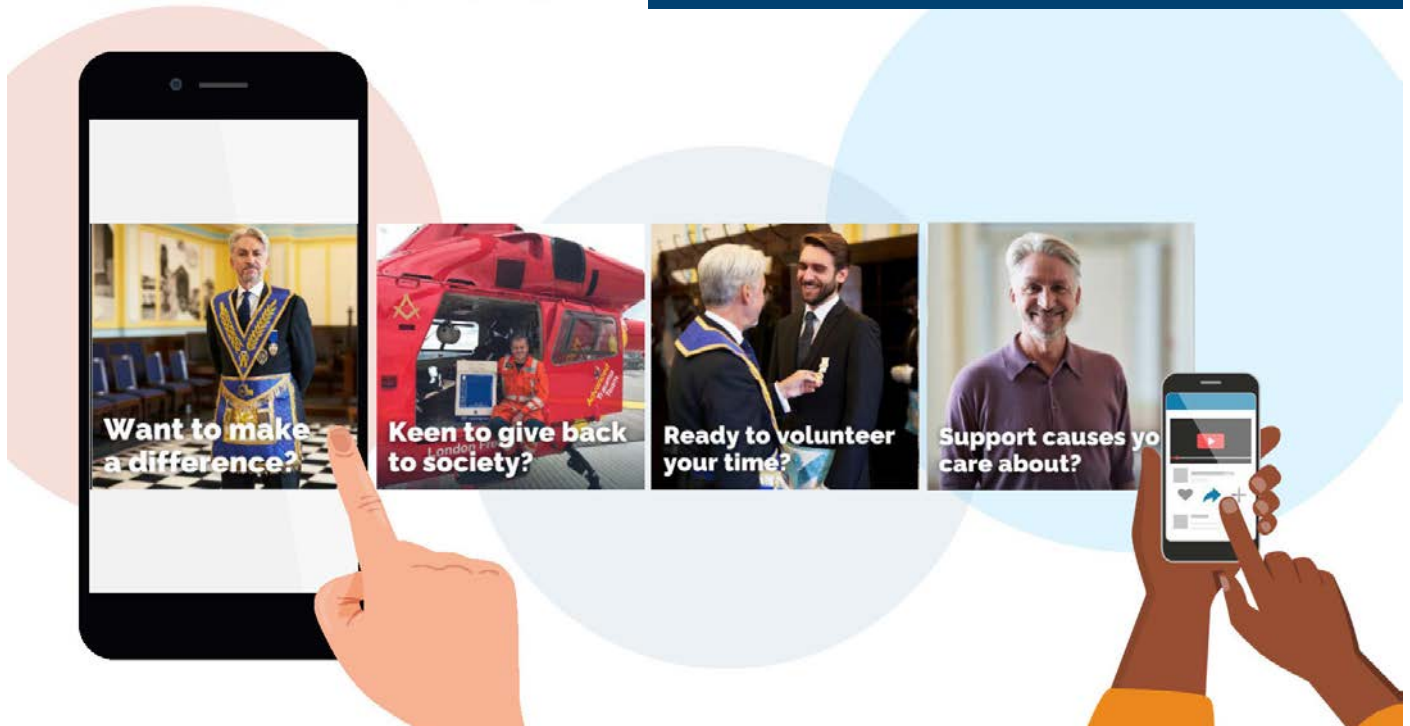
Adrian joined the UGLE Audit Committee in 2017 and has chaired the Committee since 2020. He has also been on the Board of General Purposes since 2019 and the Risk Committee since 2020. Adrian was particularly helpful in all we needed to consider during the pandemic.

Further biographical details can be found on the UGLE website here
<https://www.ugle.org.uk/about-us/ugle-governance>

[illegible]

FACEBOOK ADVERT CONCEPT

Below is an example of the type of advert that UGLE will be running on Facebook. As you can see, Facebook users will be able to scroll through a number of different tiles, each with unique messaging and high quality images, depicting our values. UGLE will also be utilising video and our increased press presence to craft additional adverts that will be used throughout the campaign.



All of the Facebook ads will be running through the UGLE Facebook page, rather than individual Provincial pages.

The advertising campaign will optimise data capture via various methods, such as directing Facebook users towards the 'Interested in Joining' page on the UGLE website, capturing the potential member data within Facebook to be

sent to the Provinces and potentially asking members to sign up to a virtual Discover Freemasonry webinar.

Therefore, as a result of the campaign, our Province should receive membership enquiries which will be managed by the Membership Team in the usual way, before being passed on to the relevant Lodges.

You can view our Candidates Charter on the public website [here](#).

This describes what a Candidate can expect from us during the process of becoming a Freemason and the targeted timeline.

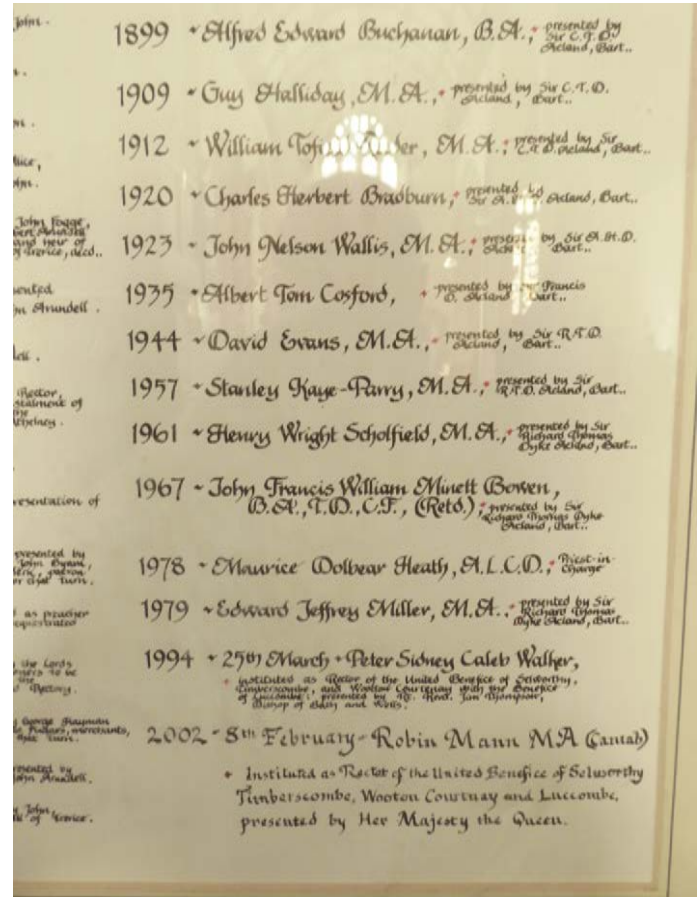


Coincidences

W Bro Allan Flexman PPrGStB (West Wales) of Arrow Lodge recounts a strange coincidence.



Pictured Above - Selworthy Church
Pictured Top Right John Bowen listed in 1967
Pictured below 'Through the mist'



I wonder how many readers will have heard of Selworthy?

It is a small hamlet perched on the side of a large hill, overlooking the main road between Minehead and Porlock. It is on a huge estate now owned by the National Trust. It consists mainly of pretty stone houses with thatched roofs, and a prominent white church that is visible for miles around.

I first discovered it in the early years of this century when we went to a caravan site for our holiday. I went into the church, and on reading the list of vicars,

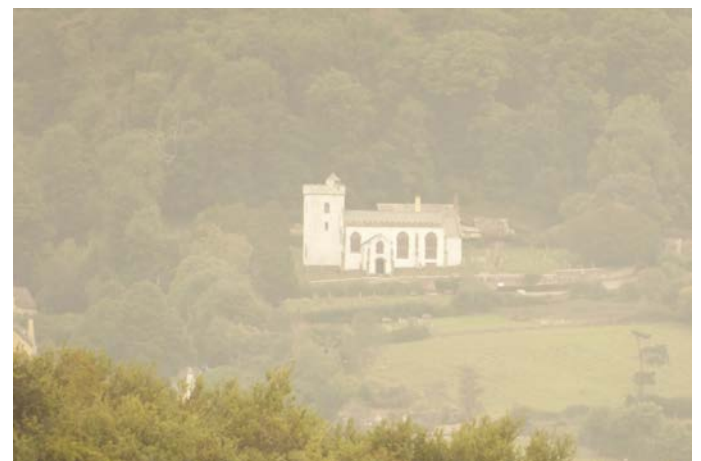
I noticed one with the surnames of Bowen. I was then a member of Vitruvian Lodge, and my proposer was our late PGM, Rev David Bowen. At my next meeting with David I told him of the name coincidence, and I was really surprised when he said, "That was my dad, and I spent happy times exploring Selworthy and the area."

David was aged 20 when his father took up the post.

From the top of Selworthy Beacon it is possible to see most of the South Wales coast, as long as there's no fog or rain.

All Saints' is a 15th century church located in the beautiful village of Selworthy which is nestled within Exmoor National Park.

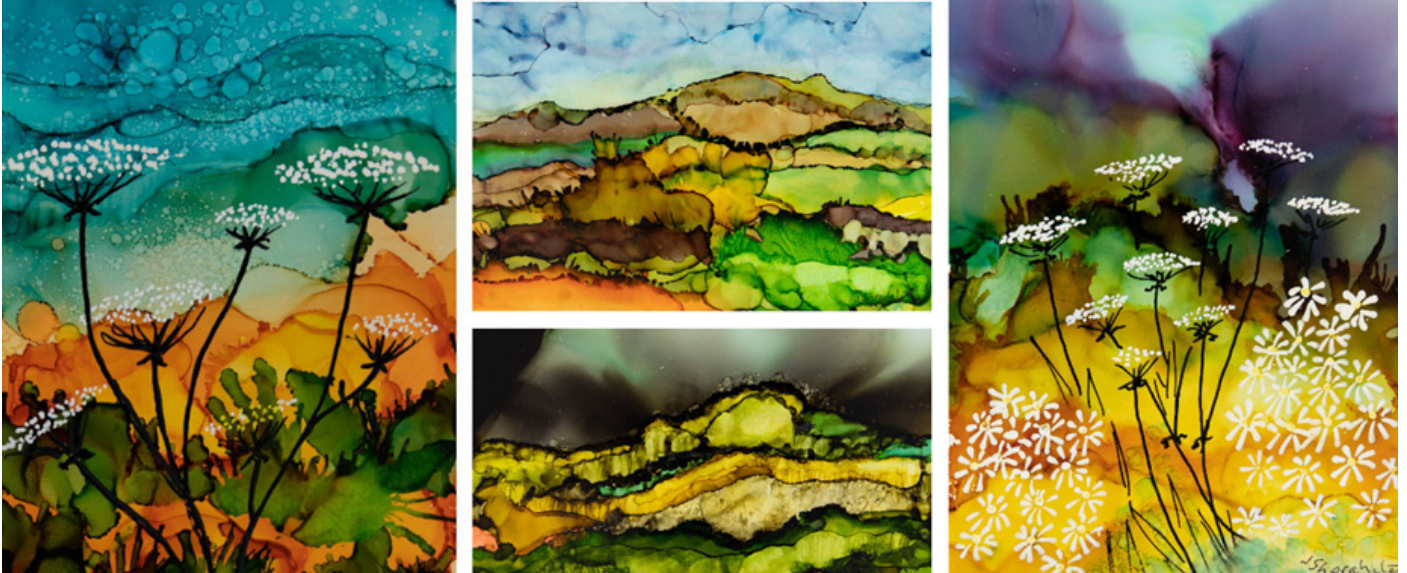
The Grade I English Heritage building is situated on the side of the hill, with breath taking views across the Porlock Vale countryside, facing towards the highest point on Exmoor, Dunkery Beacon.



St Michaels

Postcards From Life

W Bro John Sherahilo PPrGChap (Bristol) of Vitruvian Lodge looks at this year's online auction.



Pictured Above - 4 alcohol ink paintings from John as part of the online auction.

Postcards from Life is an online auction featuring some of the artists in the region. I have been invited to contribute for some years now and find the challenge rewarding and enjoyable. The artists are invited to submit postcard sized works, this year with a free choice of subject matter, meaning, this year's, 266 lots cover a wide range of themes

Between 24th October and 6th November you are invited to bid for the works through an online auction held by Brightwell.

All of the artworks will be on public display in Hereford between 24th October and 6th November as part of the Postcard Trail.

From 24th October, you can pick up a trail map from The Framing Shop and The Green Dragon in Hereford and also from St Michael's Hospice reception in Bartestree.

Over the years tens of thousands of pounds have been raised for St Michael's Hospice from Postcards from Life, Last year, 2021, almost £9000 was raised.

Please help this worthy cause and bag a work of art at the same time.

You can view the works at

www.st-michaels-hospice.org.uk/event/postcards-from-life-2022



WHERE AM I?

Last month we asked, can you identify this well known Herefordshire landmark?

This building nestles in a very well know valley in the west of the Province. Established in 1147, the building was re-purposed around 1633 by Viscount Scudamore to its current use. It is still considered one of the finest examples in the west of England.

Over its long history it has housed ancient relics and housed the tomb of Lady Matilda de Bohun

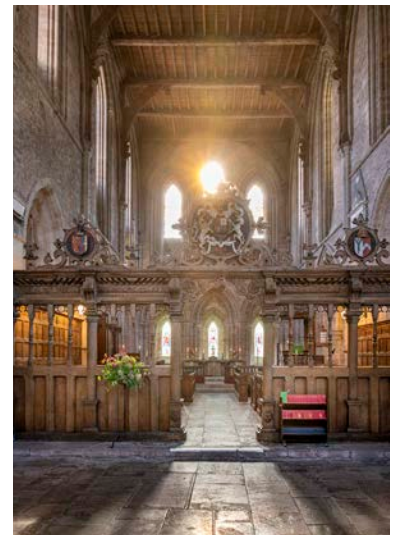
The answer was Dore Abbey in the Golden Valley.

Last Month's Answer

Dore Abbey was established in 1147 and was colonised by monks from Morimond Abbey, France. When the monks arrived from Morimond, they found themselves on the border lordship of Ewyas Harold, owned by Robert Fitz Harold of Ewyas, who became the first patron of Dore. In 1321 Abbot Richard was given a relic of the Holy Cross by William de Gradisson, and it was said that crowds visited the abbey to see this. Lady Matilda de Bohun's tomb (1318) was also a focal point of the abbey. Despite these attractions, the house was never a particularly rich one, in the survey of 1535 the net annual income was valued at £101 and the house was dissolved a year later. In 1633 the owner, Viscount Scudamore, decided to restore what was left of the abbey church and convert it for use as the local

parish church. A tower was added, the interior refurbished, a fine Renaissance screen inserted, and windows replaced with seventeenth-century stained glass. By the late nineteenth century, the church was again in need of attention. Repairs were carried out by Roland Paul in 1901-09. The medieval presbytery is one of the finest Cistercian survivals in the west of Britain, and the interior dates from the restoration of the church in the early 1630s. The remains comprise the crossing and the liturgical east end of the monastic church, and there are still traces of the nave, and fragments of the claustral buildings. Further information and directions on the Visit Herefordshire Website.

<https://www.visitherefordshire.co.uk/discover/dore-abbey>





WHERE AM I?

For this month, can you identify this well known Herefordshire landmark?

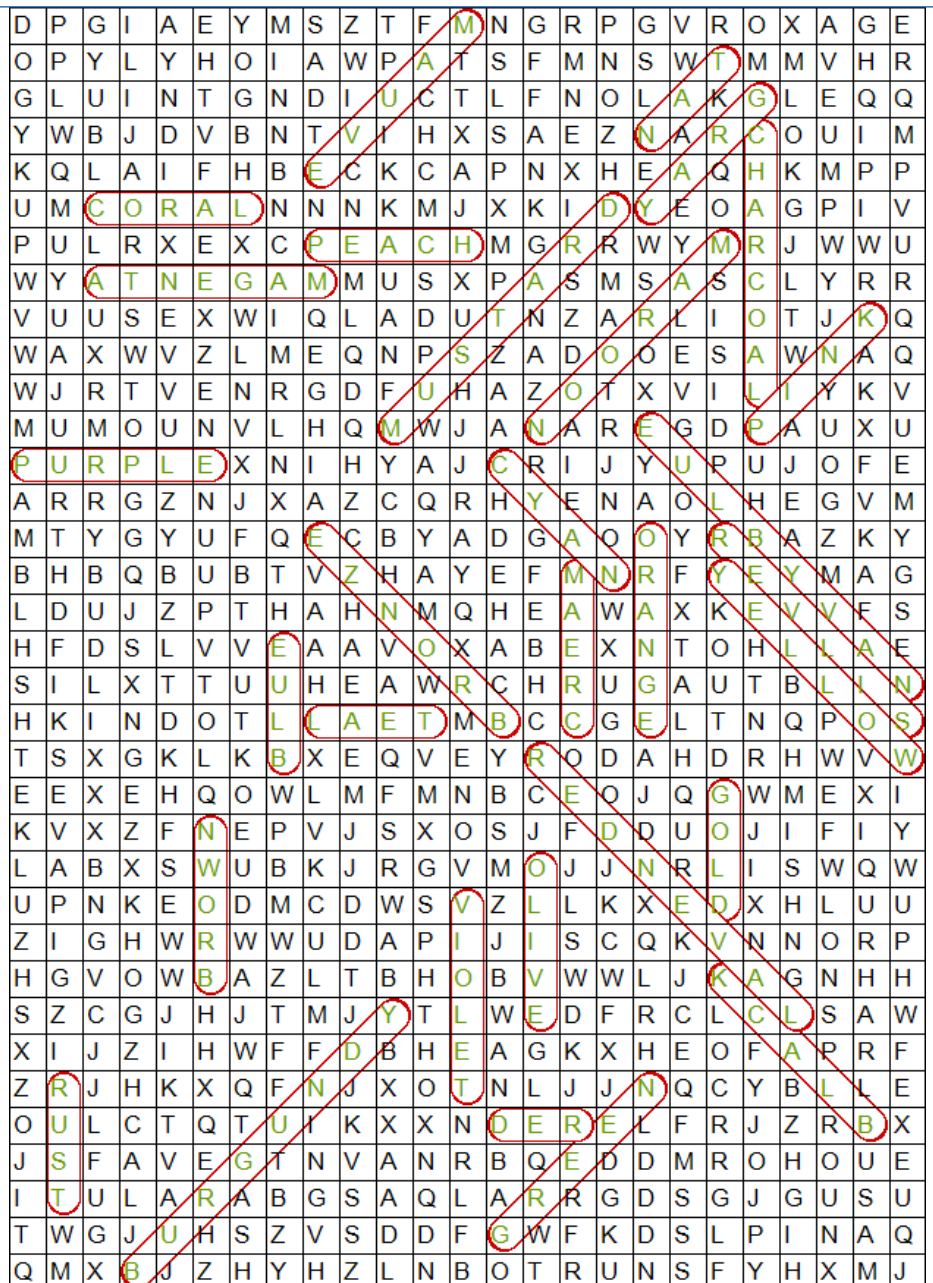
Q

An Atmospheric Neolithic burial chamber made of great stone slabs set in the hills of the Golden Valley. Over 5,000 years old, legend has it a giant was slain here.

Off the beaten track with glorious views across the Black Mountains.

Where am I? Answer next month.

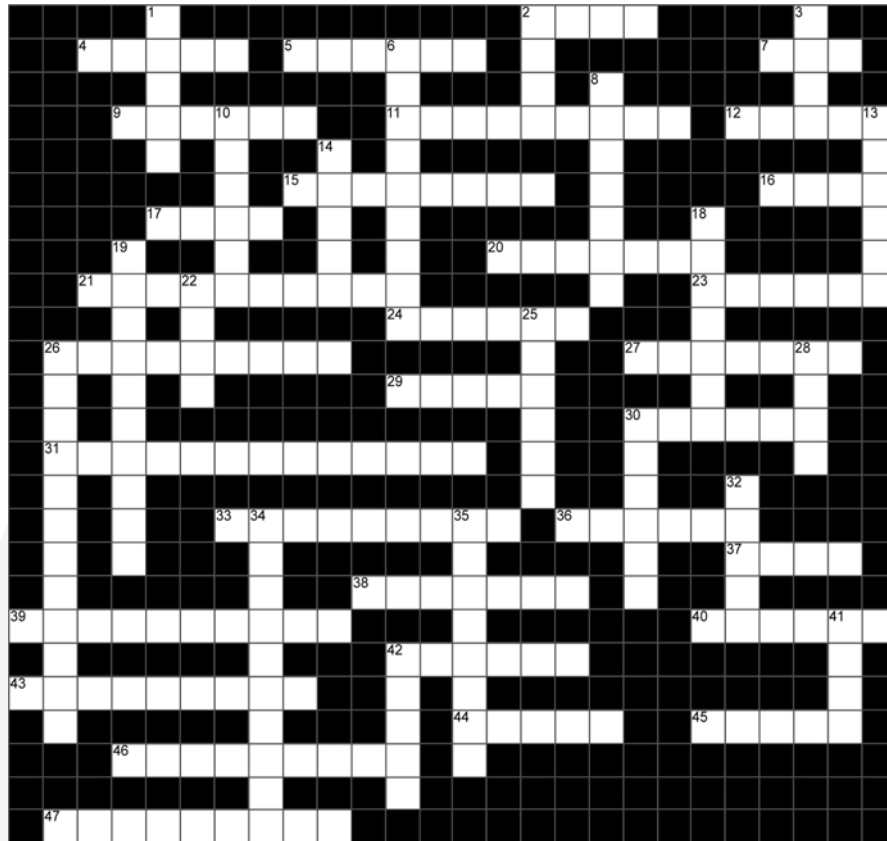
Here are the answers to the Word Search from the September edition on colours.





CROSSWORD

Solomon Crossword No.1 - The First Degree.



Across

- 2. Where you find the Senior Warden (4)
- 4. The universe is their temple (5)
- 5. The Wardens both raise and lower one (7)
- 7. In whom you place your trust (3)
- 9. Points out the advantages of education (5)
- 11. The Volume of the ... (6,3)
- 12. Column with four scroll shaped ornaments on the capital (5)
- 15. Placed around the neck (5,3)
- 16. On your arrival you are this (4)
- 17. Great grandfather of David (4)
- 20. The Worshipful Masters way of getting things done (6)
- 21. It should chasten you (10)
- 23. You declare upon this (6)
- 24. Escort to the candidate (6)
- 26. He looks after the money (9)
- 27. The distinguishing characteristic of a freemasons heart (7)
- 29. Used to keep order (5)
- 30. The column associated with the Master denotes this (6)
- 31. We have a Book of these (13)
- 33. And 13 Down. From where our progress starts in the Lodge (5,4,6)
- 36. Jacob has one linking to heaven (6)
- 37. These are normally collected (4)
- 38. It is open to see at all meetings (7)
- 39. Column with four scroll shaped ornaments and acanthus leaves on the capital (10)
- 40. The column associated with the Junior Warden denotes this (6)

- 42. It reports in your favour (6)
- 43. Your first steps were this (9)
- 44. Properly or Close (5)
- 45. 24 inch (5)
- 46. The Great one who designs it all (9)
- 47. Sign with thumb deflected (9)

Down

- 1. What you were most desirous of (5)
- 2. The Millennium Lodge (4)
- 3. When the sun is at its meridian (4)
- 6. The Warrant when received by the Worshipful Master (9)
- 8. He looks after our welfare (7)
- 10. The Masters Jewel (6)
- 13. See 33 Across
- 14. We are all classed as this (5)
- 18. Two of these are part of the immoveable jewels (7)
- 19. The ritual is performed in these (10)
- 22. Not the Immediate Past Master but the one before (4)
- 25. The Lodge is this form of square (6)
- 26. For the master to lay lines on (7,5)
- 28. We call off at high (4)
- 30. Senior and Junior (6)
- 32. Throne to which our words and actions ascend (5)
- 34. Taken in a state of darkness (10)
- 35. The column associated with the Senior Warden denotes this (7)
- 41. Hiram king of ... (4)
- 42. A sacred dictate is imprinted on the heart (5)