

Ross Masonic Club



Supporting Local Freemasons

The Craftsmen

Week Commencing 15th June 2020

Issue Number Eleven

Welcome to the eleventh edition of the Ross Masonic Club Weekly Round-up. A chance to share what we have been up to, with some light hearted articles during the break in face to face meetings.

I hope you have all been keeping safe and well.

This week we delve deeper into the hidden talents of our members. David Hudson talks us through his lifelong hobby and how it has punctuated the various stages of his life. Graham King with his own story harking back to Martin Thorne's article, which rang a bell with him. Nigel Donovan shares his 'Man Cave' with a new friend which gives him quite a buzz.

There is also an article on being 'Fraud Aware'. It is not meant to scare you, simply provide awareness and a few official websites where you can get further information and assistance. If this is useful we can follow up with further, more specific articles in the future. Generally if it sounds too good to be true, it probably is!

Next week we will return to our regular features on gardening and 'Would You Know The Answer' with an answer on which columns are placed at the Master and his Warden's chairs. We also look at the hidden talents of Godfrey Hannam.

If you have a hidden talent we could feature, or have a question about masonry you would like answered then drop me a line and we will try to include it in a future issue.

Keep safe Brethren and keep in contact.



Photo © Eleanor Moore

Social and Online Media Roundup

Facebook



We have set up a Facebook Group for Ross Masonic Club. We currently have 28 members across the Lodges and Chapter. Any members of Lodges or Chapter that meet at Ross Masonic Hall are welcome to join in.

More opportunities to Zoom together

If you have not previously joined in, we now have a meeting that starts earlier on a Friday at 7:30pm as well as the 8:45pm meeting for the 9 o'clock toast

It's simple to setup and Billy can help with support of you need it

Face to Face

In a virtual way!

Billy Russell opened the Zoom session at 7:30pm last week so anyone wishing to meet earlier could do so.

We had a number of members join at 7:30pm who remained on till the second 'batch' joined at 8:45pm to toast absent brethren at 9pm.

Our largest number ever by far.

We will continue to do this so as many people as possible can join in if they wish. If you would like to join at either time please see the details in the email circulating the newsletter.

Our weekly meetings have now found 'fame' through the PGM for Herefordshire and MEGS, Gloucestershire and Herefordshire tweeting about our 9 o'clock toast on the 5th June.

PGM for Herefordshire, MEGS, Glos & ...
6,043 Tweets

1,401 Following 1,622 Followers

Followed by @GrahamCKing, Shaun Butler - United Grand Lodge of England, and 22 others you follow

Tweets Tweets & replies Media Likes

PGM for Herefordshire, MEGS, Glos & Herefords @DGLBM... · 11h
Thanks to the Brethren of the Ross-on-Wye Masonic Centre for proposing the #TimetoToast this evening and congratulations on your ongoing commitment to engage with your members and for your excellent newsletter "The Craftsmen" herefordshiremasons.org.uk/the-craftsmen-... Have a good weekend 🍷☀️

Caeruleum Club @hfdslightblues · 11h
#TimeToToast tonight by the Ross Masonic Zoom meeting club. The toast is to absent brethren & to happier times ahead being re united over our province. 🍷 @PGLHerefords @DGLBMason @GrahamCKing1 @tommysantillo @CarpetCareMan



4 20

Coffee Break and T@3

The answers to last week's quiz on the 2nd Degree Tracing Board submitted by John Thornton and the reminiscing of Patrick Eyre.



Quiz on 2nd Degree Tracing Board

1. What was the width of the outer rim or shell of the two great pillars at the entrance to the 1st Temple in Jerusalem?
2. What was stored within them?
3. What fruit was shown on the chapters?
4. What was the name of Jephtha's father?
5. What was drawn on the two spherical balls on top of the pillars?
6. How is 'Plenty' depicted on the Tracing Board?
7. In which Country did Jephtha raise a small army prior to the Ammonitish War?
8. How many Liberal Arts and Sciences are there?
9. In what were the Fellow Craft masons paid their wages?
10. Who is stood outside the door to 'The Middle Chamber' to prevent unauthorised access?

Quiz Answers

1. 4 inches or a hand's breadth.
2. The Constitutional Roles.
3. Pomegranates
4. Gilead
5. Maps of the Celestial and Terrestrial Globes
6. By an ear of corn near to a fall of water.
7. The land of Tob.
8. Seven. Grammar, rhetoric, logic, arithmetic, geometry, music and astronomy.
9. Specie
10. The Senior Warden.

Patrick Eyre Remembers the 57 Varieties

On Sunday there was a television programme about the Heinz Beans factory in Wigan which brought back many memories of the connections I had with this Company in 1956.

With some financial help from my Father it was the year I entered the road haulage business buying my first truck.

The picture you see is the actual vehicle - it is a Commer - powered by a 3 cylinder opposed piston Diesel engine which made a great deal of noise. I had won a contract with a company in Reading, Berkshire manufacturing a revolutionary light weight building block and the contractors building the new Wigan factory were using the block in huge quantities.

It was a 12 hour turn round in those days - Reading to Wigan and back, and filling in with other more local work, I was making the trip about 3 times a week. With no motorways - very tiring as you can imagine but financially rewarding



Another member of my family circle - cousin Pamela and husband - won a national Heinz competition for a slogan to advertise their Beans. **'BEANS MEANZ HEINZ'**

Rather more rewarding than my effort I suspect !!

Fraud - Helping to be 'fraud aware'

There has been an increase of fraud since the onset of Covid-19. Andrew Moore provides some information to help you be fraud aware and some useful sites if you need to seek help.



I do not profess to be an expert, but never has the maxim 'I was taught to be cautious' been more apt when it comes to preventing fraud. Some people still believe that online fraud and viruses are written by spotty teenagers in their garage. The reality is very different, with many activities being undertaken by large well organised crime gangs with call centres that would rival any well known UK brand.

The National Crime Agency states:

Fraud is the most commonly experienced crime in the UK. Fraud costs the UK many billions of pounds every year. The impact of fraud and related offences such as market abuse and counterfeiting, can be devastating, ranging from unaffordable personal losses suffered by vulnerable victims to impacting the ability of organisations to stay in business.

Data breaches continue to be a key enabler of fraud. Personal and financial information obtained in a breach can be used to commit frauds affecting individuals, the private and public sectors alike. By harvesting personal and financial information through data breaches, criminals are able to commit fraud and damage people, businesses and services.



Personally I regularly check this site <https://haveibeenpwned.com> to make sure my login and password have not been compromised. You can input your email address and it will tell you if you have appeared on a list of user credentials for sale. If you are on the list it is prudent to change your password for the compromised site (and any other sites that you may have used the same login and password for).

Breaches you were pwned in

A "breach" is an incident where data has been unintentionally exposed to the public. Using the 1Password password manager helps you ensure all your passwords are strong and unique such that a breach of one service doesn't put your other services at risk.



Adobe: In October 2013, 153 million Adobe accounts were breached with each containing an internal ID, username, email, encrypted password and a password hint in plain text. The password cryptography was poorly done and many were quickly resolved back to plain text. The unencrypted hints also disclosed much about the passwords adding further to the risk that hundreds of millions of Adobe customers already faced.

Compromised data: Email addresses, Password hints, Passwords, Usernames



LinkedIn: In May 2016, LinkedIn had 164 million email addresses and passwords exposed. Originally hacked in 2012, the data remained out of sight until being offered for sale on a dark market site 4 years later. The passwords in the breach were stored as SHA1 hashes without salt, the vast majority of which were quickly cracked in the days following the release of the data.

Compromised data: Email addresses, Passwords

Here for example it has told me that in 2013 the user accounts were breached at Adobe and in 2016 the same at LinkedIn. I have subsequently changed my password on both accounts and any other accounts where I used the same login and password.

Fraud against individuals is typically targeted at elderly and other vulnerable people, for whom the consequences can often be devastating – psychologically as well as financially.

Fraud is increasingly being committed online. Where previously a fraud may have been committed by phone, post or in person, online access enables fraudsters to exploit victims remotely, often from another country. Some investment frauds, and most computer software service fraud, are known to be perpetrated from overseas.

Identity Theft

Identity theft occurs when criminals access enough personal information about an individual to commit fraud. They use various techniques to steal these details, from outright theft and social engineering to harvesting data through cybercrime. With this information, criminals can impersonate the victim in order to access bank accounts, fraudulently claim benefits or obtain genuine documents in the victim's name. Criminals are increasingly stealing identity data online, for example persuading individuals to disclose personal details and passwords through 'phishing' emails, and then trading the data.

Other Useful Sites Include

The National Cyber Security Centre [NCSC](#) With useful guidance [here](#) on how to avoid cyber crime and what to do if you become a victim.

Fraud watch international is a good source of the most recent scams and can be found [here](#)

Hidden Mysteries? - No, Hidden Talents!

This week we focus on the hidden talents of Graham King who was prompted to respond to the article from Martin Thorne on Bell Ringing.

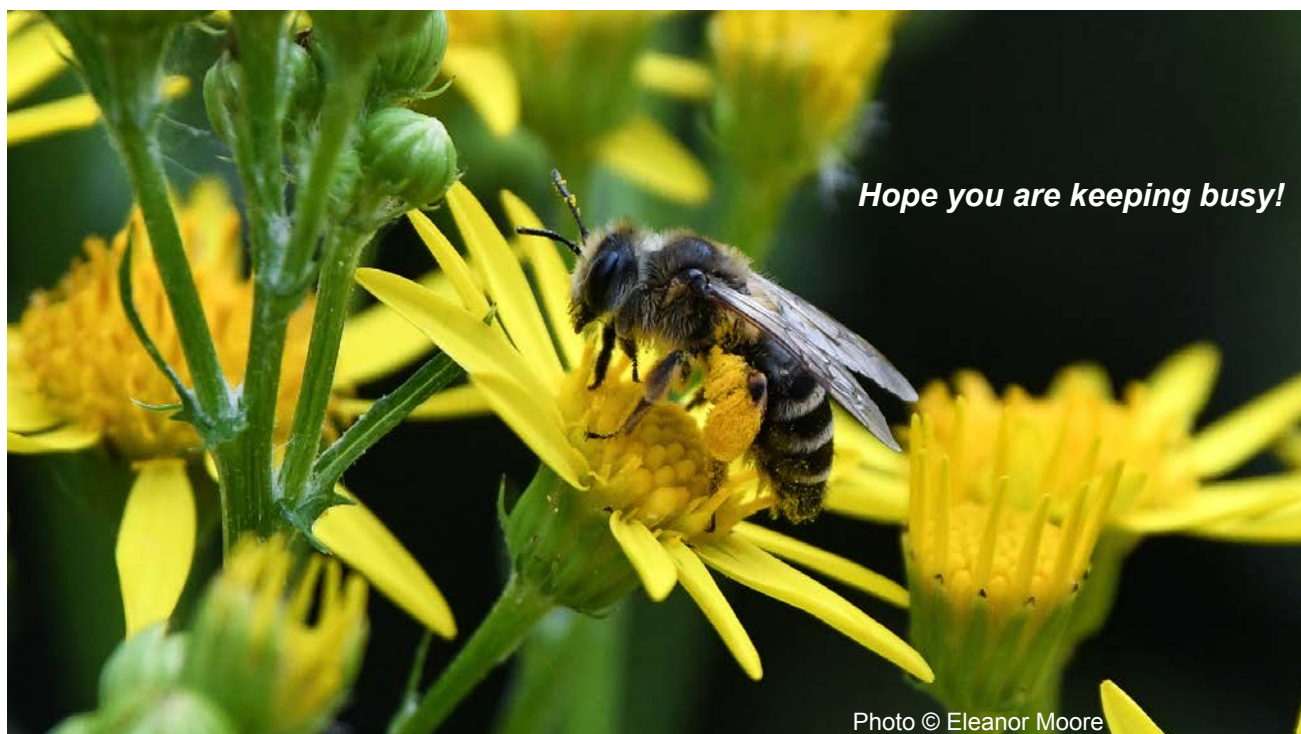
I did enjoy reading the article in the Craftsmen by W Bro Martin Thorne about Church Bell Ringing, which caused me to think back to the mid 1960's. I was fortunate to be encouraged to take part in bell ringing myself at St Philip and St Jacob in Bristol via the youth club that was attached to the church.

The vicar of St Philip and St Jacob back in those days was Rev Malcolm Widecombe, the older brother of Anne Widecombe and I can assure you that the Rev Malcolm was even more outspoken and forceful than his sister. He turned things around and saved a failing city centre church by setting a lively example.

Our tower was a 20cwt 8 and a number of the bells were cast by the Rudhall family based in Gloucestershire not too far away from Ross-on-Wye. Being located in the City Branch of the Diocese of Bristol there were many other towers nearby and on a Sunday you could easily ring at 4 different churches before evensong. The ringing team of our tower were a capable group and we had the ability to ring Cambridge Surprise Major with our own members, an unusual thing even back then. I remember as a youngster of 15 years very fit and tall being invited to ring heavy tenor bells, the heaviest I ever rang was the tenor at Wells Cathedral which was 54cwt. I never managed to get an invitation to Exeter which was 72cwt. For 5 years I travelled across the West of England ringing at many churches and rang around 20 quarter peels and 5 peels, my favourite being a Steadman Caters (a10 bell peel) at St Stephens, City Centre Bristol. Bell ringing is like all team activities, there is a special bond between the team, you are all dependent on each other, you learn your part and you trust the rest of the team to do the same.

My time ringing drew to a close as progress with other sports such as badminton and hockey steadily made more demands on my spare time. There could be a little more to talk about regarding hockey, I must be one of the few left who started playing hockey in the days when the roll in was still the manner on returning the ball into play from the side line, ask John Thornton? He must be old enough to remember that.

Just as an aside I have rung once since the 1960's and that was last August at Michealdean Church they held an open day and I couldn't resist going to see if like riding a bike you never forget. I am thankful to say I didn't break a stay and came away with some happy memories being awakened.



Hope you are keeping busy!

Photo © Eleanor Moore

Hidden Mysteries? - No, Hidden Talents!

This week we focus on the hidden talents of David Hudson and his life long fascination with model trains. His title being - THERE'S MORE TO DO THAN GARDENING!



46201 Princess Elizabeth of 1957

Santa was very generous in 1957! He left me a train set: Tri-ang O-O gauge Class 8P 4-6-2 46201 Princess Elizabeth, with two “blood and custard” coaches, an oval of track and a battery power pack and controller. Brilliant!

In the following years it was frequently used and abused, unpacked, set up on the floor, then re-boxed again. Over time, with the onset of Grammar School and a passion for sport it was unboxed less often, and then, not at all. But my mother didn't throw things away.

It remained in storage until 1977, when I bought my first “property”, a one-bedroom flat in Edgbaston.

I worked out that I could house a 6-foot by 4-foot board behind the wardrobe, which I could pull out and hinge down onto the bed for support. So, the not quite forgotten set was unpacked and brought back into use. The base-board had the track permanently fixed to it, new track as the original oval was damaged and dated, still an oval circuit, but with a passing loop and siding added. The battery box was replaced with electric controllers. New locomotives, rolling stock and accessories were gradually added, invariably London North Eastern Railway (LNER) reflecting my growing interest in the heritage of my “home” area of the North East of England.

As time moved on marriage, a new job and a move to a new house meant the layout was again boxed and put into storage, except for the locomotives, which were given their own glass fronted wall cabinet in my office. And there they stayed for many years and three more house moves. New locomotives were added from time to time as the manufacturers brought out models that were relevant to my interests. Having retired, and by now living in a house with a walk-in attic, I decided it was high time to get the models doing that for which they were built; to run on a layout. But this time I'd do it properly and build something appropriate. For inspiration I first went back to 1957.

My father had got a new job which meant we'd recently moved from my home town of Wallsend to Gilsland. At Wallsend every day I saw lots of rail traffic passing by on the Riverside loop lines. However, it lacked variety. Numerous Electrical Multiple Units taking thousands of workers to the shipyards or the city, and a constant stream of ex-North Eastern Railway, elderly but indestructible, J27s, pouring coal from the inland pits into the colliers on the Tyne bound for London, Scandinavia, and lands far away. The only highlight was the twice weekly boat train pulled by a V3 that had relieved the A4 Pacific at Newcastle Central for the last 10 miles to the Norway Ferry loading at the Tyne Commission Quay. This wouldn't do!



LNER J72 taking coals from Thirlwall Drift Mine

There's More To Do Than Gardening (Contd)



LNER D49 Cheshire coasts into Long Byre Halt

At Gilsland the two room Primary School I attended stood beneath the embankment of the Newcastle to Carlisle main line. What a difference; the range of traffic was beyond belief. Hauled by mostly ex-LNER locomotives from Carlisle Canal or Blaydon sheds, you could expect to see express passenger trains pulled by A3 Pacifics or Gresley V2s, local passenger services with D49s, all manner of mixed freight hauled by K3s, a daily long rake of cattle trucks bound for the Tyneside abattoirs, quarry stone and timber, iron ore, coke, steel, with B1s and J39s on all manner of rosters. Thinking back, how I wished that I'd had a camera. The concept was perfect, and this matched my collection of locomotives.

But Gilsland Station would not be easy to model. It was then large for a rural station, and on a long straight section of track, on a high embankment with a bridge at one end over the main A69, and one at the other over the Poltross Burn and Hadrian's Wall. Too ambitious for my modelling abilities. Two miles east was the next station, Greenhead. Mid-way between the two is a hamlet called Long Byre, comprising a farm and a short terrace, which never had a station, but it did have a lane to a coal mine, Thirlwall Colliery, abandoned in 1928. So, the idea was born; a halt station at Long Byre, with a siding to the drift mine, set in post-war LNER days. Almost total fiction, enabling me to get away with a lot of creativity, and also a lot of mistakes.

Construction began in the winter of 2017-18; this is definitely a winter and wet day hobby. Self-assembly book shelves from Homebase topped by chipboard are the base for the model. They work very well, as the model is not designed to be moved, for they give a strong level operational surface plus storage space below for tools and materials. Scenic back boards are of plywood. Structural scenery is made by using chicken wire and plaster over wooden formers. Scenery and back boards were then painted using emulsion; sampler pots are a boon!

I've fitted in the station halt, with a goods shed and car park, a couple of farm cottages with a garden and some farm paddocks. The drift mine has offices, workshop and boiler house, land sales and loading dock. All the locomotives are either Hornby or Bachmann ready to run, as are most of the rolling stock, although I have made a few coal trucks. Buildings are a mixture of ready-made, kits, and scratch built – I'm about to make a coal drop for the coal mine.

It isn't finished as there is still a lot of fine detail to do, signalling to set up, and also one big, potentially messy but critical job, of ballasting the track. When this is done I expect I'll then start fiddling with it and altering things. I'm also already thinking of the next layout, one with Direct Computer Control in the other side of the attic.

So, what has happened to Princess Elizabeth as, after all, she started this all off? I'm pleased to say that I still have this engine, even though it doesn't fit with the layout as it is a model of a former London Midland Scottish locomotive now in British Rail black. It is showing its age and the quality of the modelling is crude compared to current models. But it still runs. Not bad for a 62-year-old toy.

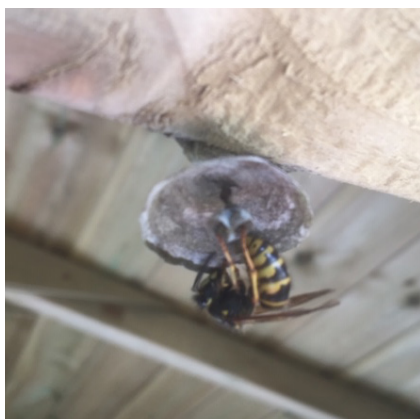
Fifty Sheds of Grey

This week we focus on an important visitor to Nigel Donovan's 'Man Cave'

Whilst relaxing in the recent sunshine, we had the time to observe the comings and goings of a bumble bee, which was nesting in the grass (I would like to call it a lawn, but that would be a bit generous!).

We were also very aware of lots of other bee-like insects buzzing around, which I have to say has continued through the "bee season", having since observed a large number of bee abodes in various places around the property - in the walls, in the soffits, in the ground and anywhere else they can find shelter.

We then observed that there were all sorts of different shapes, sizes, colours and configurations which prompted us to take to Uncle Google to investigate what was what. The main project being to distinguish wasp from bee, and that old nutmeg question, the purpose of the wasp? It is so different to a bee, which after the research became very apparent, but as a surveyor, having witnessed some enormous wasps nests in lofts over the years, I was treated to following the construction of a wasp nest in the doorway of my shed (yes, THE shed that Emyr referred to), suspended from the head of the frame.



The Queen allowed me to come and go while she continued her construction work and permitted close up photography at all times (only done with my phone). Over the period of construction, she just carried on, as did I and we have shared the space without trauma.



I thought you might enjoy the progress from the first picture taken on the 20th April, through to the final dramatic picture taken last week, showing young workers and eggs still unhatched, a very unusual and rare sight. We are still sharing the space, and when wasp season is over, I will remove the little nest in the knowledge that wasps do not return to the nest again. This has been another great opportunity during lockdown, just to closely watch a piece of nature at work.

Community Hub

Local Services

A list of local suppliers and services who offer delivery services

Local Delivery Services and Community Hubs

Forest of Dean

Anyone living in the Royal Forest of Dean? This is a list of local producers who will provide delivery services
<https://www.foresthub.co.uk/covid-19-home-delivery-services>

Llangrove-Llangarron-Llancloudy and Three Ashes Community Hub

Local Community Hub able to help with shopping, prescription collections etc

They are on Facebook. <https://www.facebook.com/Llangrove-Llangarron-Llancloudy-and-Three-Ashes-Community-104075311144231/>

Email address is communityhub22@gmail.com

Telephone number is 01989 770916.

They hope to answer all calls between 9am and 5pm but if they are engaged or you call outside of these hours you can leave a message.

Ross on Wye

Hanks Butchers

45 Broad Street

Ross

01989 562216

www.meatandgame.co.uk

info@meatandgame.co.uk

Meat, game, eggs

Pengethley Farm Shop

Pengethley Garden Centre

Peterstow

01989 730430

www.pengethleyfarmshop.com

sale.pfs@btconnect.com

Vegetables, dairy, bakery, meat, deli, general groceries

Ross Good Neighbours

www.rosscdt.org.uk

help@rosscdt.org.uk

01763 802046

Provide a number of helpful services to the Ross Community

Thank you to David Hudson, Geraint Bevan and Nigel Donovan for the useful information above.